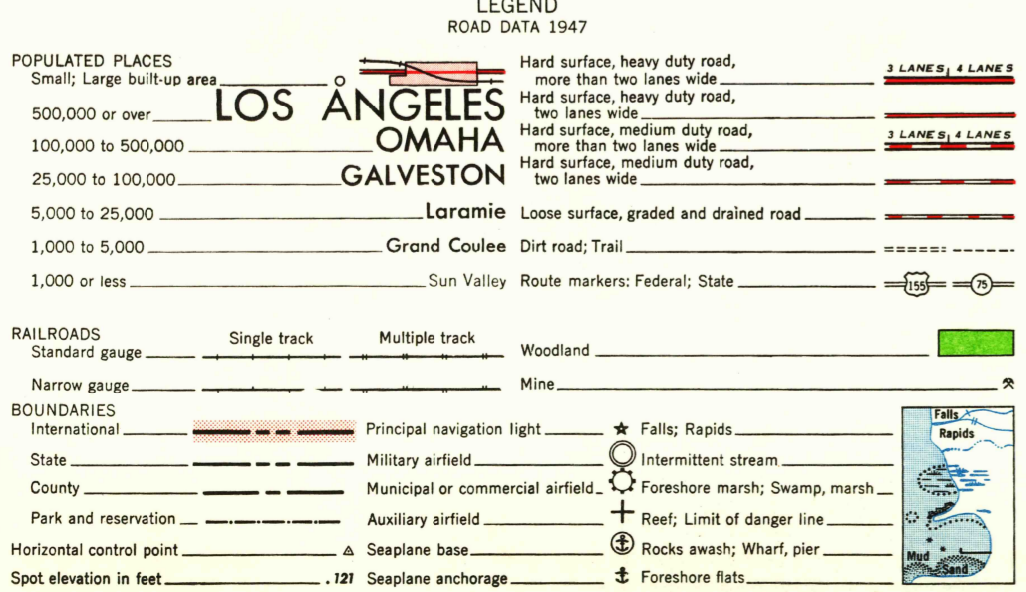
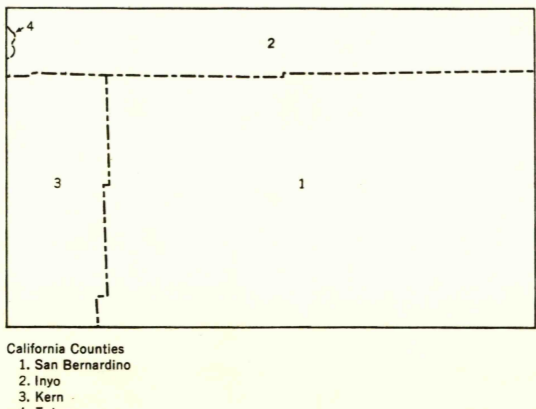


Prepared under the direction of the Chief of Engineers by the Army Map Service (AM), Corps of Engineers, Department of the Army, Washington, D. C. Compiled in 1947 from United States Quadrangles 1:62,500 and 1:250,000 Corps of Engineers and U. S. Geological Survey, 1915-1943; County Highway Maps, 1937-1941; Statistical Data to 1946. Woodland partially revised from aerial photography dated 1942-1945. Aerial photography by U. S. Air Force. Road classifications verified by State Highway Department, 1947. Control by U. S. Coast and Geodetic Survey. UTM grid values revised by AMS, 1953.

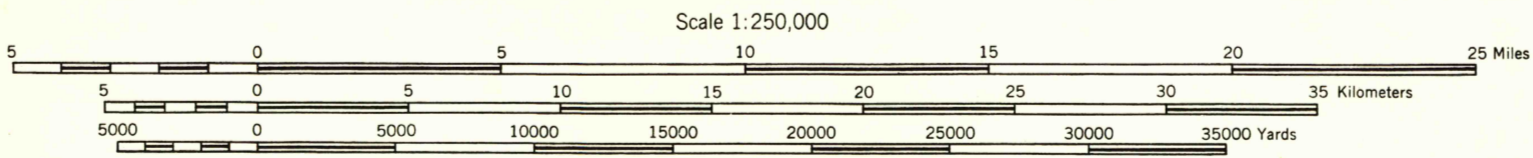


TOWNSHIP OR RANGE LINE
LAND GRANT BOUNDARY

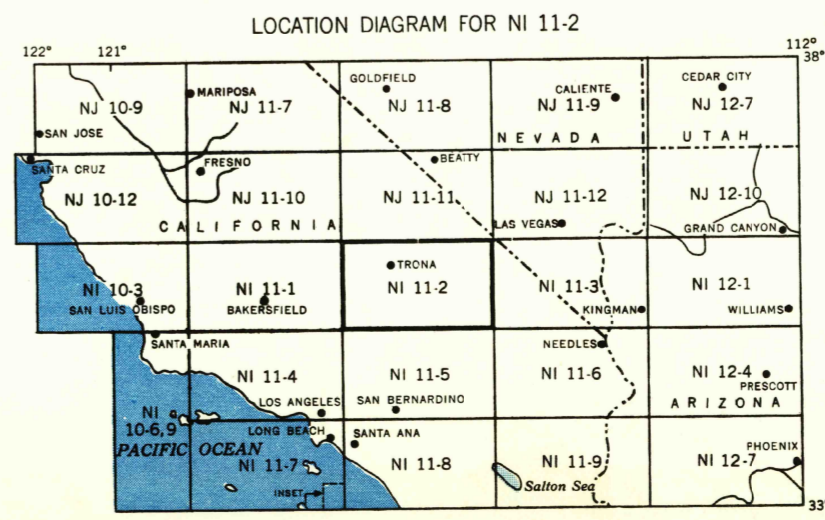
INDEX TO BOUNDARIES



6	5	4	3	2	1
7	8	9	10	11	12
13	14	15	16	17	18
19	20	21	22	23	24
25	26	27	28	29	30
31	32	33	34	35	36

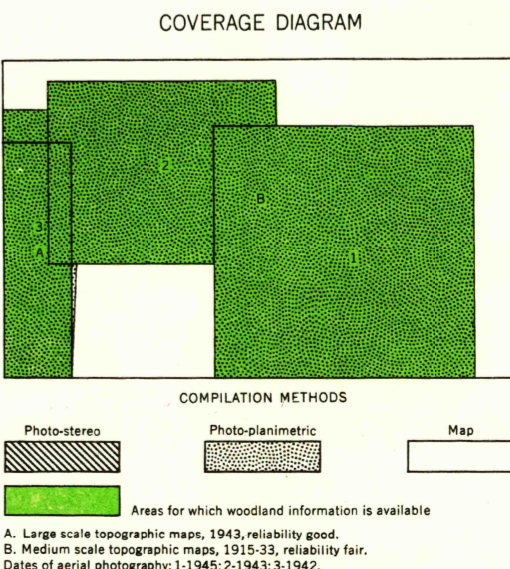


FOR SALE BY U. S. GEOLOGICAL SURVEY, DENVER 25, COLORADO OR WASHINGTON 25, D. C.



USGS
Historical File
Topographic Division

INTERIOR-GEOLOGICAL SURVEY WASHINGTON, D. C. 1960
M R 4757



TRONA, CALIFORNIA

U.S.G.S.
FILE COPY
TOPOGRAPHIC DIVISION

Dec - 7 1950